

Items to Prepare

- (1) Scissors (2) Ruler
(3) Elastic rubber (rubber band, hair band)

How to Bundle Your Hair

Wigs are manufactured using the cut end of your hair as the root.
Please securely bind your cut hair with a rubber band so that the cut end and hair tips do not get mixed up.

- For a thin bundle, bind at a place 1cm from the cut end.
- For a thick bundle, bind at a place 2cm from the cut end.



Do not wet your hair before cutting it for the donation. Mold and bacteria can grow on wet hair. It can also affect other donated hair. Always make sure the hair is completely dry before sending it. Hair that is not bundled together cannot be used and will be disposed of as waste.

① Divide and bind your hair into several bundles

If the bundle has lots of hair or is too thick, it will be difficult to cut with scissors, and the cut end will be uneven.

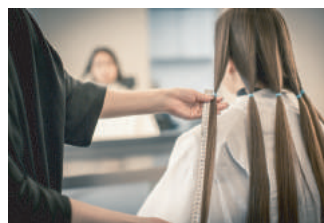
Always adjust the amount of hair in each bundle.



② Cut your hair the length you wish to donate

The length from the cut end to the tip of your hair is the "Donated length."

Consider the balance of your finished hairstyle and the length of hair you wish to donate, and decide how much hair to cut. Adjust the position of the rubber band as needed.



③ Bind one person's hair into one big bunch

If the rubber band at the cut end is loose, the bundle will come undone during shipping. Always bind the smaller bundles, regardless of length, into one big bunch.



④ Style your hair

After you have cut your hair to be donated, it can be wetted, cut, and styled.

